

ONLY AT



**TANGALOOMA**  
ISLAND RESORT  
Moreton Island, Qld

**banana**  
life

# SUMMIT

## SCHOOL ADVENTURES

Contact the Education Team

+61 7 3637 2160

[education@tangalooma.com](mailto:education@tangalooma.com)





# SUMMIT SCHOOL ADVENTURES

banana  
life

## ABOUT THESE PROGRAMS

Using our expertise in team-building and group facilitation, our SUMMIT programs have been designed to support the learning outcomes and breakthroughs that matter most to teachers and students.

We provide a safe and supportive environment for teachers and students to try new concepts and challenges, to build their confidence and problem solving skills.

Our expert Banana Life team provide all the coaching and encouragement the children need to make sure they get the most out of their time at Tangalooma.

Contact the Education Team

+61 7 3637 2160

[education@tangalooma.com](mailto:education@tangalooma.com)



# SUMMIT SCHOOL ADVENTURES



## WHAT CAN WE EXPECT?

- Expertly facilitated team-building activities designed alongside our C.R.O.C.C.S. framework
- Puzzles and problem solving games
- Indoor and outdoor group games
- A mix of technology, physical and environmental themes
- All supervised and guided by our trained staff

## WHAT'S INCLUDED?

- Experienced and professional facilitators
- All game equipment
- Risk assessments

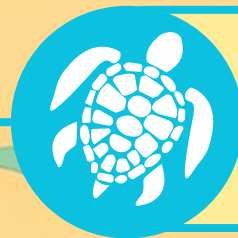




C	<b>CREATIVITY</b>	Students are provided with opportunities to think <u>creatively</u> by looking for new and creative solutions.
R	<b>RESOURCEFULNESS</b>	Students learn to evaluate their surroundings to solve problems and complete challenges, by using the <u>resources</u> at their disposal.
O	<b>OVERCOME OBSTACLES</b>	Players are constantly faced with weird and wonderful <u>obstacles to overcome</u> . This teaches <u>resilience</u> in the face of discomfort. They will need to work together as a team to figure out the best strategy to achieve success.
C	<b>COURTESY FOR ALL</b>	We build independence and deliver it in a way that is thoughtful, inclusive and considerate of others, positive vibes only! <u>Courtesy</u> is expected from students both towards our facilitators and to each other.
C	<b>COLLABORATION</b>	Teamwork and cooperation are critical to their success. Students will work together and celebrate this success together, fostering a unique sense of team spirit <u>borne from collaboration</u> .
S	<b>SOLIDARITY</b>	We embrace new student experiences while fostering a team spirit in which <u>everyone looks out for each other</u> .

# WHICH PROGRAM DO WE CHOOSE?

- Environmental, Conservation and Sustainability focus
- Developed as a collaboration with Ecomarines Foundation



## ECO ADVENTURE



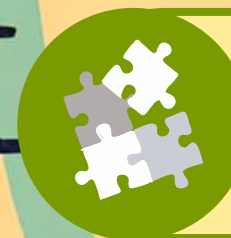
## MEGA BUILDERS

- Indoor activity
- Problem Solving
- Science of Chain Reactions



## TANGA TRAILBLAZER

- Wayfinding Tasks
- Whole group stays together
- Clever use of technology



## OUTDOOR MINI-GAMES

- Outdoor activity
- Teamwork
- Physical games
- Puzzles galore





# MEGA BUILDERS

**SUMMIT**  
SCHOOL ADVENTURES

## ABOUT THIS PROGRAM

👥 Up to 200 pax ⌚ 1.5 hours

The Mega Builders Program will challenge students to think outside the box. They will build their own RUBE GOLDBERG MACHINE and face seemingly endless obstacles to overcome.

Games and activities are tailored to groups that prefer to stay indoors but still engage students and challenge their problem solving abilities as a team.

## HOW IT WORKS

- Played in teams of 6-10
- Mix of physical and puzzle-based games
- Teams will build a Rube Goldberg Machine and learn about the science of chain reactions







# MEGA BUILDERS

## HIGHLIGHTS



## RUBE GOLDBERG MACHINE

Who was Rube Goldberg and what can we learn about his contraptions and how they work? Learn about the transfer of energy!



## TEMPLATES TO GET STARTED

All packs include templates to get you started and building right away. If you can follow Lego instructions, you can do this!

## AT A SNAPSHOT

Problem-Solving

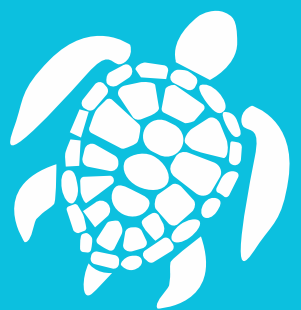
Science

Collaboration

Indoors

Teamwork





# ECO ADVENTURE

**SUMMIT**  
SCHOOL ADVENTURES

## ABOUT THIS PROGRAM

👥 Up to 200 pax

🕒 1.5 hours

The Eco Adventure Program is focused on connecting students to nature, and teaching them about sustainability and the historical and environmental values of Moreton Island and Tangalooma.

Our facilitator will guide the group around the Resort, sticking together. Teams will need to complete challenges as they move to new locations.

Games and activities are designed in collaboration with the Ecomarines Foundation.

## HOW IT WORKS

- Played in teams of 6-10
- Each team has a tablet to complete the tasks.
- Mix of physical and puzzle-based games
- Students will discuss learnings at the end of the program

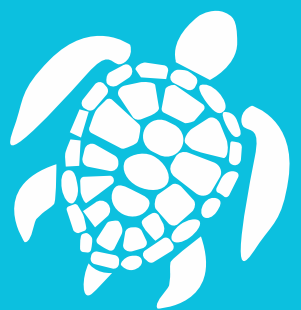


Contact the Education Team

+61 7 3637 2160

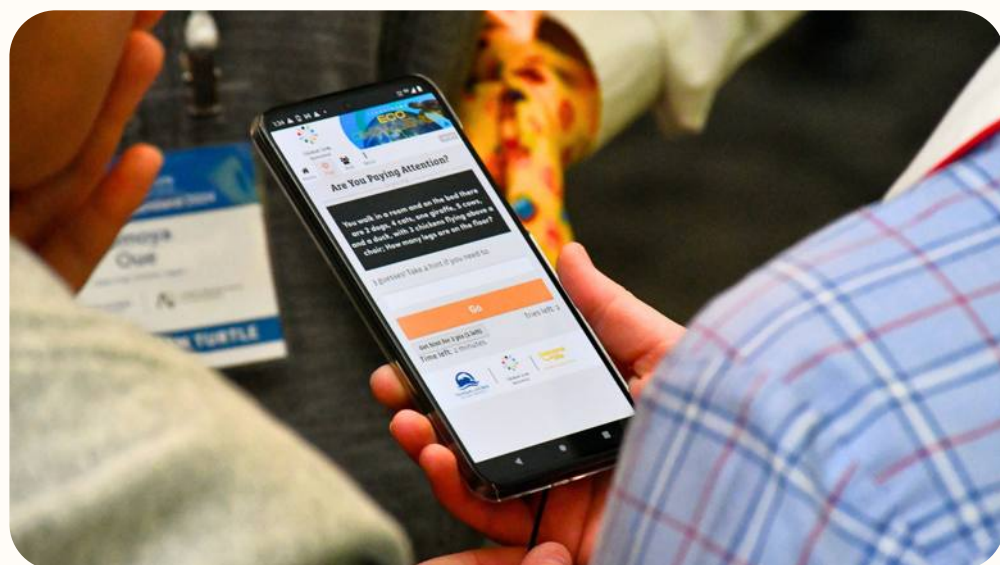
[education@tangalooma.com](mailto:education@tangalooma.com)





# ECO ADVENTURE

## HIGHLIGHTS



### EDUCATIONAL

Students learn about conservation and the environment through mini-challenges and hands-on learning.



### CREATIVE PHOTOS

Can you locate the item in the local area, and use it creatively in a photo?

## AT A SNAPSHOT

Sustainability

Environmental

Collaboration

Communication

Outdoor





# OUTDOOR MINI-GAMES

**SUMMIT**  
SCHOOL ADVENTURES

## ABOUT THIS PROGRAM



Up to 200 pax



1.5 hours

The Outdoor Mini-Games program is a fun, hands-on and interactive game involving a series of challenges on the beach and grassy areas of Tangalooma Island Resort.

Games and activities are inspired by the clever and colourful puzzles from the TV show 'Survivor'.

## HOW IT WORKS

- Played in teams of 6-10
- Mix of physical and puzzle-based games
- Variety of games like
  - Tower Build
  - River Raft
- Students will discuss learnings at the end of the program







# OUTDOOR MINI-GAMES

## HIGHLIGHTS



### TOWER BUILD

Teams must move as one, to stack the blocks.



### SPEED TAG

Communication is key and so is the art of distraction. Teams work together to collect all 30 pieces within 30 seconds.

## AT A SNAPSHOT

Problem-Solving

Puzzles and  
Team Games

Collaboration

Communication

Teamwork





# TANGA TRAILBLAZERS

**SUMMIT**  
SCHOOL ADVENTURES

## ABOUT THIS PROGRAM



Up to 200 pax



1.5 hours

The Tanga Trailblazers program is an exciting team activity that encourages teamwork, communication and collaboration. This is part scavenger hunt, part guided tour!

Along the trail, students need to pay careful attention to their surroundings for hidden clues and answers. They also have some physical puzzles to solve along the way!

Games and activities are all fully supervised by our Banana Life staff, students will play as one large group, but split into teams.

## HOW IT WORKS

- Played in teams of 6-10
- Variety of games like
  - Way finding challenges
  - Clue Hunting
- Students will discuss learnings at the end of the program







# TANGA TRAILBLAZERS

## HIGHLIGHTS



### ANGRY BIRDS

Work as a team to send soft objects flying towards the target.  
Communication with team mates is key!



### GAMES & PUZZLES

A range of puzzles to solve along the way.

## AT A SNAPSHOT

Outdoors

Puzzles and Team Games

Collaboration

Communication

Teamwork





Tangalooma upholds a proud working relationship with Banana Life  
for all student, conference and corporate groups.

**Contact the Education Team**

**+61 7 3637 2160**  
**[education@tangalooma.com](mailto:education@tangalooma.com)**